

SOMERSET RURAL

*Electric
Cooperative*



MEMBER OWNED
Somerset, PA

Annual Report
2025

ABOUT THE COOPERATIVE

Who We Are

Energized in 1940, we are a member-owned rural electric cooperative serving 13,920 members in four Pennsylvania counties - Bedford, Fayette, Somerset and Westmoreland and one county in Maryland - Garrett.

The cooperative maintains 1,831 miles of energized electric lines. Somerset Rural Electric employs 42 full-time employees and is governed by a board of nine directors elected by the membership.

Our Mission

The mission of Somerset Rural Electric Cooperative, Inc. is to provide a safe and reliable electric service and seek ways to improve the quality of life of its members and their neighbors.

This applies to all levels of service - residential, agricultural, recreational, commercial and industrial.

The cooperative will be compassionate in dealing with issues of comfort and personal concern, but recognizes an obligation to make wise business decisions.

Somerset Rural Electric Cooperative supports community and economic development activities that benefit the entire area.

OUR DIRECTORS & EMPLOYEES

Directors

District 1 - Floyd Lehman - Conemaugh, Ogle, Paint & Shade Township
District 2 - Russ Hillegas - Allegheny, Juniata, Quemahoning & Stonycreek Township
District 3 - Lowell Friedline - Donegal, Jefferson, Jenner & Lincoln Township
District 4 - Jerry Engle - Brothersvalley & Somerset Township
District 5 - James B. Harrold, Sr. - Middlecreek & Milford Township
District 6 - P. Timothy Vought - Black, Elk Lick & Summit Township
District 7 - Jason Huston - Fairhope, Greenville, Larimer, Northampton & Southampton Township
District 8 - Joshua C. Sechler - Upper & Lower Turkeyfoot, Saltlick, Springfield & Stewart Township
District 9 - Harvey W. Reckner, Jr. - Addison, Henry Clay Township & Garrett Co. Maryland

Jerry Engle - President, Floyd Lehman - Vice President, Lowell Friedline - Secretary/Treasurer

Employees

Ruston Ogburn, General Manager
Jessi Ditzler, Executive Assistant

Financial and Office Services

Jonathan Hillegas, Director of Finance
Kathy Armstrong, Bookkeeper
Wendy Durica, Work Order Clerk
Kristi Burkett, Billing Clerk
Daniele Anderson, Office Assistant
Jessica Maurer, Office Assistant
Kara Specht, Office Assistant
Mindy Huzsek, Office Assistant
Tim St. Clair, Custodian

Communications/Member Services

Emily Baer, Director of Marketing & Member Services

Information Technology

Gary Gindlesperger, IT Manager

Technical Services

Phil Stern, Manager of Technical Services

HVAC Department

Tony Retassie, HVAC Manager
Don Cober, HVAC Technician
Steve Tataleba, HVAC Technician
Gary Smith, HVAC Technician

Engineering & Operations

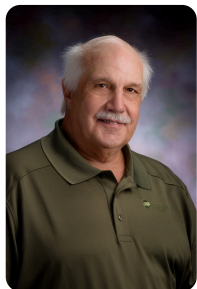
Andrew Phillippi, Manager of Outside Operations
Tawnya Zorn, Operations Assistant
John Hochard, Staking Engineer
Zack Pritts, Staking Engineer
Emily Parks, GIS/Operations Analyst
Dave Dudak, Storeroom Attendant
Roy Bittner, Chief Lineman
Phil Martz Jr., Chief Lineman
Brian Marker, Chief Lineman
Glenn Gross, Chief Lineman
Bryan Schrock, Chief Lineman
Adam Barnes, Lineman
Tanner Smith, Lineman
Sam Shober, Lineman
Casey Pyle, Lineman
Alex Mazanowski, Lineman
Garrett Thomas, Lineman
Carter Engleka, Lineman
Andy Nicklow, Apprentice Lineman
Rick Yoder, Groundworker
Phil Read, Right of Way Crew Chief
Drew Boyer, Right of Way Crew

Metering Department

Roger Shroyer, Metering Technician
Jeff Brant, Metering Technician

2025 Director Nominees

JERRY L. ENGLE - DISTRICT 4



JERRY L. ENGLE currently represents District 4 on the Somerset REC Board of Directors and is the board president. He completed the National Rural Electric Cooperative Association's director training program and received his Credentialed Cooperative Director Certificate, Board Leadership Certificate and obtained Director Gold status.

A graduate of Berlin Brothersvalley High School, Jerry is a retired building and remodeling contractor residing in the Hays Mill area near Meyersdale. Prior to owning his own business, he worked as a carpenter for several area builders.

Jerry and his wife, the former Mary Susan Shaffer, have two children, Bryan and Brooke and two grandsons, Jack and Jace. In his spare time, Jerry enjoys hunting and serves as an elder of Hay's United Church of Christ and the Cemetery Association.

P. TIMOTHY VOUGHT - DISTRICT 6



P. TIMOTHY VOUGHT is a Credentialed Cooperative Director representing District 6 and resides in Summit Township. He graduated from Meyersdale Joint High School. He continued his education at Penn State University earning a Bachelor of Science degree and master's degree in education in Agricultural Science. He retired from Rockwood Area High School where he was employed as an Ag Science teacher and varsity rifle coach. Currently, he is semi-retired working on his family farm.

Tim enjoys volunteering at many local organizations throughout the county. He is a member of Amity United Church of Christ in Meyersdale where he currently serves as an elder, is a life member of the NRA, Penn State Alumni Association and PA Young Farmers. Tim is also an annual member of the Rockwood Young Farmers organization and Somerset County Farm Bureau. In 1964, he was selected to attend the Somerset REC Youth Tour.

Mr. Vought resides on Old Mule Trail Road in Garrett with his wife Shirley. In his spare time, Tim enjoys hunting and target shooting. He also plays the trumpet in the Penn State Alumni Blue Band, Somerset County Community Band and Doc's Boys. Together, he and Shirley have raised four children and is the proud grandfather of twelve grandchildren.

JOSHUA C. SECHLER - DISTRICT 8



JOSHUA C. SECHLER represents District 8 residing in Lower Turkeyfoot Township. A native of Confluence, he is a 1999 graduate of Meyersdale Area High School. He continued his education at Indiana University of Pennsylvania earning a Bachelor of Arts degree in History and Economics and is a graduate from Pennsylvania Bankers Association's Advanced School of Banking.

While serving the membership, Josh has completed all training courses to obtain the following board achievements: Credentialed Cooperative Director, Board Leadership Certificate and Director Gold Certificate. Since 2005, Joshua has been employed at Somerset Trust Company and is currently the Assistant Vice President of Treasury Management.

Joshua enjoys volunteering at many local organizations throughout the county. He is a member of the Turkeyfoot Valley Historical Society, financial secretary of Kingwood I.O.O.F. Lodge #1010, and holds a director position at the following organizations: Kingwood Picnic Association, Kingwood I.O.O.F. Cemetery, Crossroads Cemetery Association, Younkin Cemetery Association, and Jersey Settlement Cemetery Association. Joshua is a member of Faith Assembly in Uniontown, Somerset-Cambria Chapter of the SAR and Mt. Union Church Camp #502.

He resides on Kingwood Road in Confluence with his wife Mallory and daughter Audia. In his spare time, Joshua enjoys making maple syrup, attending sporting events in Pittsburgh, traveling, hiking, playing guitar, collecting baseball cards and helping his wife operate Salt & Light Meadows Flower Farm.

ANNUAL REPORT

Weathering the Storms

Your Cooperative remains steadfast in its mission of providing electric service to our members. Our focus on this goal built our capabilities to successfully work through difficult operational, regulatory, and financial issues.

The past several years introduced new challenges across nearly every aspect of our business. We understand that some issues have not yet been resolved, and we will always face obstacles. However, in several key areas, we believe we have weathered the storms and are stronger for having done so.

Operations

The massive transition in our generation supply and the projection of data centers shifting load patterns create many unknowns for our electric transmission system and the generation supply that powers it. Nearly all these issues involve regional and national questions which we can provide input to, but ultimately, any solutions will be determined by wider market and regulatory influences. Therefore, we focus our attention on the variables we can more effectively control.

The quality of a distribution system starts with the state of substations, lines, equipment, and right-of-way maintenance. Since the initial buildout of our system began over 80 years ago, we have continually updated the system to incorporate technological advances and increase the loading capacity. A major priority for the last 30 years has been to increase the back feeding capability between our substations.

The ability to power a substation from a second source creates a significant benefit for our members during the toughest operational times. Each of our substations has at least one other supply option and many have multiple back-up sources. This effort took decades to complete but will now be the backbone of our system for many generations to come.

It is also worth noting that all our substations are either directly connected to a transmission line or can be back fed from a transmission line. These lines are like the interstate highway system for electricity. They have more capacity, higher reliability, and become the top priority for restoration after storm damage. A recent example occurred with the utilities neighboring us to the north with restoration of power to some substations taking up to five days. With redundancy and transmission connections, these times are often cut in half.

Closer to home, the storm that struck the evening before Easter caused heavy damage to the southern portion of our system, breaking 19 poles as wind leveled trees of all sizes. Crews worked through the night and much of Easter day clearing trees and repairing lines. Our Mason Dixon Substation lost its power supply in the storm, but crews switched to a back feed, cutting the restoration time by many hours. Because of this, the number of members without power on Sunday evening went from hundreds to only a few of our most remote members.

Supply Chain

Disruptions to our supply chain caused us to reevaluate our business relationships and inventory levels for our field operations and office functionality. This streamlined the field equipment in our storerooms and added redundancy in our office communication and processing systems. The transition from just-in-time delivery to higher inventory levels required us to increase our expenditure during this time, however, we believe we are better prepared to handle future disruptions.

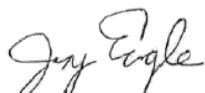
Regulatory

It is difficult to quantify the impact that regulations have on our cooperative. However, we do know that areas ranging from electric generation to water heaters have driven up costs for our members. Working with our cooperative partners across Pennsylvania and throughout the country, we explain to legislators the impact of these regulations on our members. This work will never be complete, but many of the regulatory burdens that were imposed or discussed have been tempered by understanding that the people at the end of the electric lines will have higher bills and lower reliability if regulations outpace technology.


Finances

The cooperative continues to maintain a high level of equity. We plan to steadily pay down debt and limit our need to borrow, especially during periods of higher interest rates. We believe this financial strength leads directly to increased long-term reliability by maintaining our options as the electric industry continues to evolve. Fortunately, if we do need to borrow, we can rely on the relationships developed across the cooperative network. Many of these relationships have been strengthened by financial institutions recognizing the steadiness of electric cooperatives throughout the recent volatility.

Facing these various obstacles in recent years has demonstrated once again that the cooperative model serves our members well. Our work will never be done, but for now we have weathered these storms and will be ready for what comes next.



Jerry Engle, Board President



Ruston Ogburn, General Manager

MINUTES OF THE ANNUAL MEETING OF THE MEMBERSHIP OF SOMERSET RURAL ELECTRIC COOPERATIVE, INC.

The Annual Meeting of members of Somerset Rural Electric Cooperative, Inc., Industrial Parkway, Somerset, Pennsylvania, was held at the Somerset Area High School Auditorium at 645 S. Columbia Avenue, Somerset, Pa., on Thursday, May 23, 2024.

Presiding over the meeting was C. Ben Waltermire, President of the Board of Directors. Minutes were recorded by Lowell L. Friedline, Secretary-Treasurer.

President Waltermire announced a quorum of members was reached and called the meeting to order.

Lowell L. Friedline, Secretary-Treasurer, read the official annual meeting notice and certified that it had been mailed to each member of the Cooperative in accordance with the bylaws.

Mr. Friedline then referred to the minutes of the last annual meeting held on Thursday, May 25, 2023. A copy of the minutes was presented to voting members. A motion, followed by a second, carried to approve the minutes as recorded.

The treasurer's report was presented by Mr. Friedline. He stated that the financial report will be published in the June issue of "Penn Lines" magazine. He reviewed 2023 year-end assets and liabilities totaling approximately \$50 million, along with a breakdown of revenues and expenses. A motion, followed by a second, carried to approve the treasurer's report as recorded.

The Manager's Report followed with Mr. Ogburn starting his presentation by discussing how system reliability is the primary focus of our cooperative. He also discussed Broadband and the plans to set a formal path and communicate it to our members.

The next order of business was the election of members to serve on the board of directors. President Waltermire introduced Attorney Jim Cascio, for the purpose of describing the nomination and election process. Mr. Cascio provided a report of the Nominating Committee. He reported that the Nominating Committee met and selected the following members as nominees.

DISTRICT 1: Conemaugh, Paint, Ogle, and Shade Townships
Floyd Lehman

DISTRICT 5: Middlecreek and Milford Townships
Tim Hinebaugh
James B. Harrold, Sr.
Jesse Moore

DISTRICT 9: Addison, Henry Clay Townships, and Garrett Co., Md
Harvey W. Reckner, Jr.
Harvey Wetzler

The cooperative utilized the escheats law to provide \$1,000 scholarships to ten qualified high school seniors. The escheats law allows the cooperative to keep unclaimed capital credit money and use it in its community for three specific functions - youth scholarships, civic purposes and energy assistance.

Scholarship presentations were made by Manager Ogburn to: Emily Conn, Turkeyfoot, Kiley Emerick, Meyersdale, Elizabeth Haer, Rockwood, Samantha Jo Hayman, Berlin, Isaac Jamison, Shanksville, Alexa Lintz, Rockwood, Lily Schrock, North Star, Tori Shaffer, Berlin, Joshua Wagner, Rockwood, and Tanner Wassilchalk, Somerset.

Manager Ogburn then introduced guest speaker, Ms. Samantha Jo Hayman, Youth Leadership Council Delegate Pennsylvania.

The selection of grand prize winners was then announced by Emily Baer.

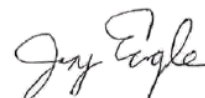
President Waltermire requested the report of tellers to provide the election results with Floyd Lehman, James B. Harrold, Sr., and Harvey W. Reckner, Jr. being elected to the board representing Districts 1, 5, and 9, respectively.

President Waltermire next called for items of unfinished business and new business. Hearing none, upon a motion followed by a second motion the meeting was adjourned.

Approved By:



Lowell Friedline, Board Secretary



Jerry Engle, Board President

Somerset Rural Electric Cooperative, Inc.

Member's Financial Report of 2024

Balance Sheets - December 31, 2024 & 2023

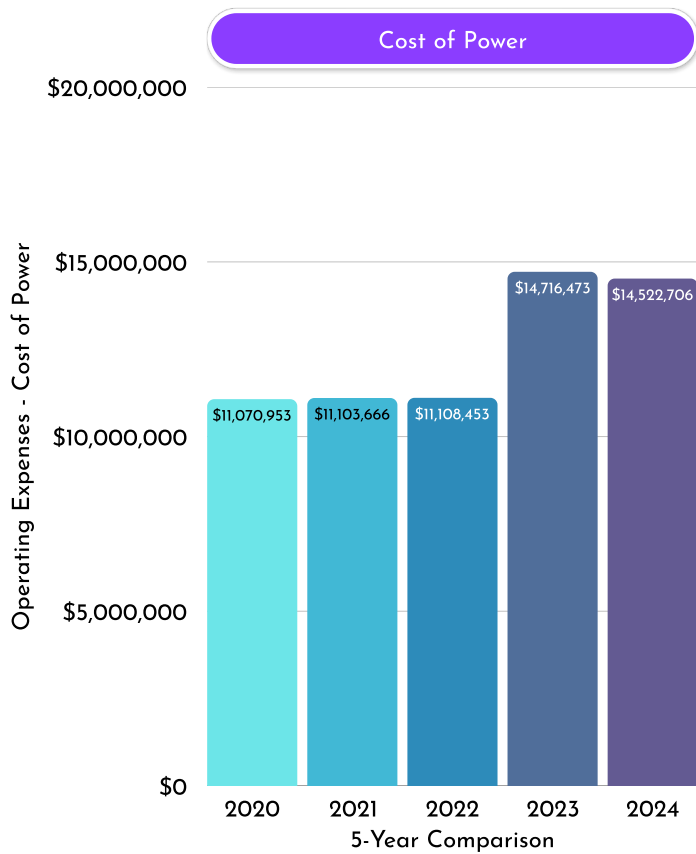
	2024	2023		2024	2023
Assets			Equities and Liabilities		
Electric plant in service	\$ 65,923,050	\$ 64,819,689	Equities		
Construction work in progress	\$ 316,661	\$ 465,696	Memberships	\$ 96,735	\$ 99,075
Total Utility Plant	\$ 66,239,711	\$ 65,285,385	Patronage capital	\$ 39,224,791	\$ 37,165,792
Accumulated provision for depreciation	\$(30,073,843)	\$(29,844,633)	Other equities	\$ 1,914,987	\$ 1,797,198
Net Utility Plant	\$ 36,165,868	\$ 35,440,752	Total Member's Equities	\$ 41,236,513	\$ 39,062,065
Investments			Long-Term Liabilities		
Investments in associated organizations	\$ 818,382	\$ 818,382	CFC mortgage notes, less current portion	\$ 4,664,656	\$ 3,709,443
Patronage capital, due from other cooperatives	\$ 10,238,459	\$ 9,289,761	Post-retirement benefit obligation	\$ 974,163	\$ 942,250
Total Investments	\$ 11,056,841	\$ 10,108,143	Total Long-Term Liabilities	\$ 5,638,819	\$ 4,651,693
Current Assets			Current Liabilities		
Cash, general	\$ 29,047	\$ 105,046	Current portion CFC mortgage notes	\$ 984,572	\$ 2,493,092
Accounts receivable, consumers, net of accumulated provision for uncollectibles	\$ 2,589,726	\$ 2,405,351	Accounts payable - purchased power	\$ 1,348,302	\$ 1,366,314
Unbilled electric revenues	\$ 550,623	\$ 490,125	Accounts payable - other	\$ 114,361	\$ 243,547
Other receivables	\$ 518,355	\$ 1,197,334	Consumer deposits	\$ 1,203,533	\$ 1,211,149
Materials & supplies	\$ 908,920	\$ 1,023,007	Other current liabilities	\$ 535,204	\$ 541,985
Prepaid expenses	\$ 93,588	\$ 34,186	Deferred credits	\$ 222,371	\$ 588,594
Prepayments	\$ 52,430	\$ 29,469	Accumulated miscellaneous operating provision	\$ 681,723	\$ 674,974
Total Current Assets	\$ 4,742,689	\$ 5,284,518	Total Current Liabilities	\$ 5,090,066	\$ 7,119,655
Deferred Debit	-	-	Total Equities and Liabilities	\$ 51,965,398	\$ 50,833,413
Total Assets	\$ 51,965,398	\$ 50,833,413			

Statements of Revenue and Patronage Capital-For the Years ended December 31, 2024 & 2023

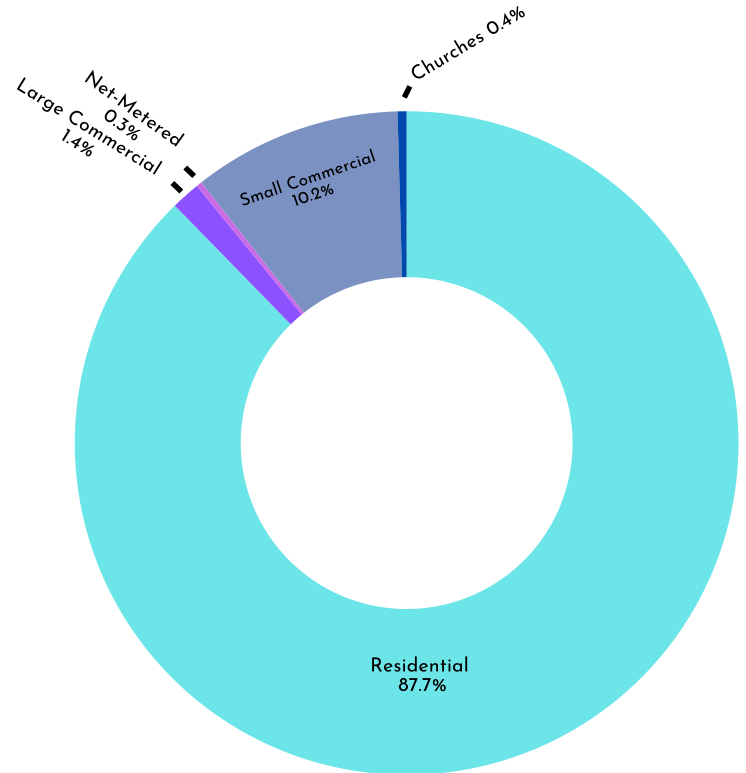
	2024	2023		2024	2023
Operating Revenue			Operating Margins Before Interest Expense		
Sales of electric energy	\$ 25,695,835	\$ 24,826,494	Interest expense	\$ 319,633	\$ 272,787
Other operating revenue	\$ 1,273,372	\$ 2,345,557	Operating Margins After Interest Expense	\$ 1,679,085	\$ 1,038,370
Total Operating Revenue	\$ 26,969,207	\$ 27,172,051	Non-operating Margins		
Operating Expenses			Interest income	\$ 39,161	\$ 37,873
Cost of power	\$ 14,522,706	\$ 14,716,473	Gain (loss) on disposition of property	\$ (178,153)	\$ 9,700
Distribution - operation	\$ 2,310,486	\$ 2,357,170	Total Nonoperating Margins	\$ (138,992)	\$ 47,573
Distribution - maintenance	\$ 3,405,204	\$ 3,861,037	Capital Credits	\$ 1,321,528	\$ 701,329
Consumer accounts	\$ 1,007,311	\$ 1,012,738	Net Margins	\$ 2,861,621	\$ 1,787,272
Consumer service & information	\$ 313,632	\$ 326,897	Patronage Capital, Beginning of Year	\$ 37,165,792	\$ 36,198,946
Administrative & general	\$ 1,319,487	\$ 1,607,829	Retirement of Capital Credits	\$ (802,622)	\$ (708,180)
Depreciation & amortization	\$ 2,091,663	\$ 1,978,750	Patronage Capital, End of Year	\$ 39,224,791	\$ 37,165,792
Total Operating Expenses	\$ 24,970,489	\$ 25,860,894			

Note: The complete 2024 Audit Report, as audited by Beer Ream Co., is available for inspection at the offices of Somerset Rural Electric Cooperative, Inc.

Cost of Power

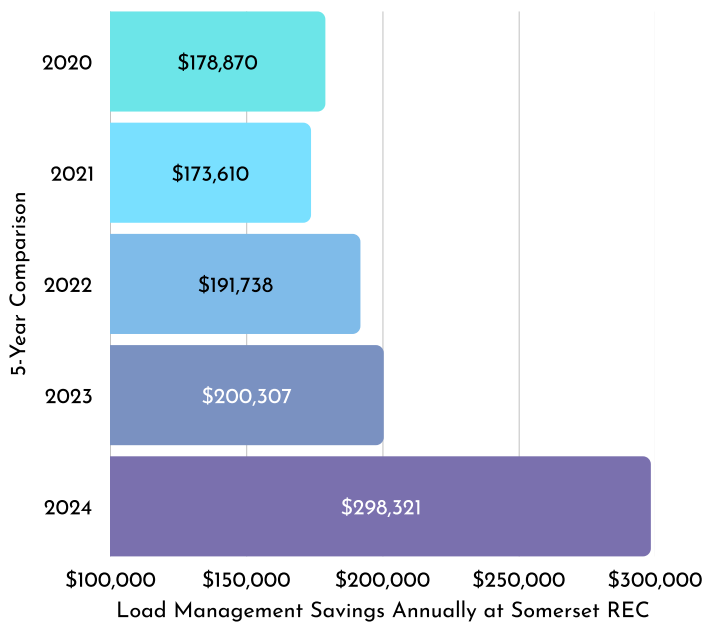


Member Account Types



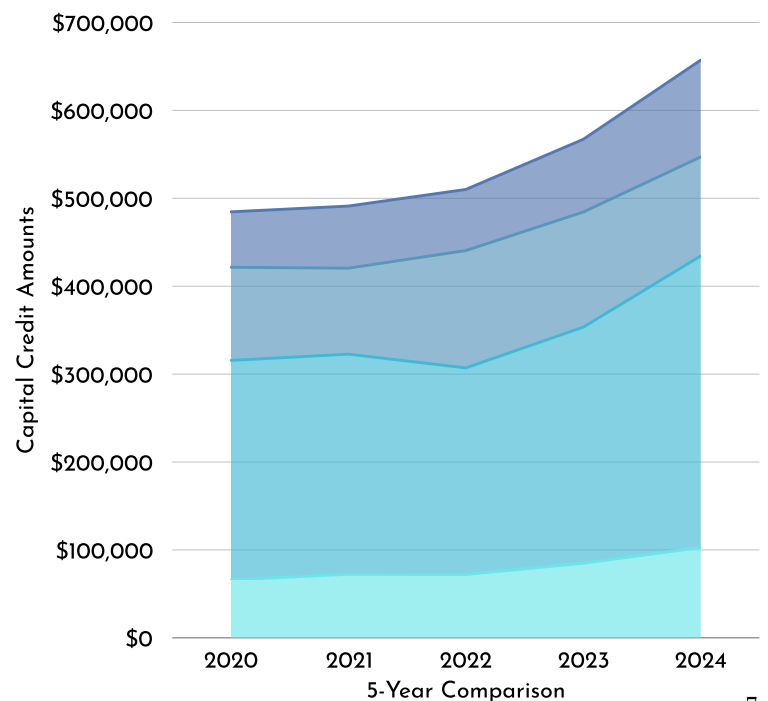
Load Management Savings

Load management is the process of balancing the supply of electricity on the network with the electrical load by adjusting or controlling the load rather than the power station output.



Capital Credits

- General Retirement Cashed Checks
- Applied to Electric Account Balances
- Estate Retirement Cashed Checks
- Unclaimed Capital Credits



2025 Scholarship Recipients

For the 24th consecutive year, Somerset Rural Electric is providing financial assistance to local students who are seeking to advance their education beyond high school. This assistance recognizes well-rounded high school seniors for outstanding academic careers, scholastic activities and community service, not financial need. Somerset REC is awarding \$1,000 scholarships. The winners were selected from a group of qualified applications received from high schools and numerous communities throughout Somerset REC's service territory. The scholarship committee congratulates our scholarship recipients' incredible accomplishments. These bright young students are motivated and excited about embarking upon the challenge of following the varied career paths they have chosen.



Adeline Barkman



Allison Barlow



Emma Bowlin



Andrew Chonko



Joseph Comfort III



McKelvey Foor

Adeline Barkman is a senior at Rockwood Area High School. She is the daughter of Reno and Amy Barkman. Her future plans include attending Washington and Jefferson College to major in data science with a minor in Spanish. She served as Class President for four years, Student Council and National Honor Society president, Vice-President of Future Business Leaders of America, and Journalism. Other clubs include Spanish Club, 3D Sculpture, Yearbook and Spanish Honor Society. Adeline was also a varsity athlete participating in basketball, softball and soccer. In her non-school time, she works part-time at Hazelbaker's Boat Rentals and Seven Springs Equipment Rentals, enjoys being outdoors, baking, shopping and traveling. She has volunteered for a variety of community service organizations such as the Special Olympics, Somerset County Mobile Food Bank, Kingwood Church of God. Adeline was also selected last summer as a Youth Tour participant.

Allison Barlow is the daughter of Gary & Jennifer Barlow and will be graduating from Northern Garrett High School. In the fall, she plans to attend the University of Cincinnati to earn a health sciences degree with a focus on pre-medicine with a career goal to become a pediatrician. She is active in Student Council, National Honor Society, Rotary Interact Club, Unified Bocce Ball and cross country. In her free time, she gives back to her community by volunteering for the Blind Campers Program helping guide campers. She enjoys working with kids and people of all ages and always strives to make sure everyone feels included in a positive atmosphere wherever she goes.

Emma Bowlin is graduating from Rockwood Area High School and is the daughter of Josh & Jennifer Bowlin. Her future plans include attending Pennsylvania Western University at California to receive a bachelors degree in health science with a career goal to become a physical therapist. In school, Emma was involved in Wellness Club, Spanish Club, the Backpack Program, Yearbook and weight training. She also volunteers at her church and enjoys reading, hiking, exercising and bible study in her free time.

Andrew Chonko is a senior at Berlin Brothersvalley High School and is the son of Andrew and Carla Chonko. After graduation, he plans to attend the University of Pittsburgh at Johnstown and receive a bachelor of science degree in mechanical engineering with a career goal to be a professional engineer. In school, he is a member of National Honor Society, and Tech-Ed where he serves as secretary. Andrew is involved at his church camp where he volunteers his time as a camp counselor.

Joseph Comfort is the son of Joe & Lisa Comfort and a senior at Meyersdale Area High School. His future plans include attending the University of Pittsburgh at Johnstown to obtain a mechanical engineering degree with a career goal of obtaining a position in automotive design and fabrication. He participated in cross country, track and wrestling, is a member of National Honor Society, SADD, and the 1000+ SAT Club. In his spare time, he enjoys hunting and fishing. He also likes to work with his 3D printer and design pieces for various projects. His pride and joy is his 1989 Ford truck that he works on with his dad and enjoys being in the garage.

McKelvey Foor is the son of Matthew and Heather Foor and a senior at Berlin-Brothersvalley High School. His future plans include attending Frostburg State University to obtain a wildlife and fisheries degree with a career goal of attending the Pennsylvania State Police Academy to become an officer. He participated on the varsity basketball and football teams, is a member of National Honor Society and has earned Eagle Scout through Boy Scouts of America. In his spare time, he works part time on the weekends, enjoys hunting and fishing, and is a member of his local archery club where he shoots bow and arrow.

2025 Scholarship Recipients



Delaney Gould



Cooper Huston



Grady Klosky



Ruth Ann Mathias



Bently Moore



Elika Pletcher

Delaney Gould is a senior at Rockwood Area High School. She is the daughter of Bruce and Meaghan Gould. Her future plans include attending Saint Vincent's College to major in biochemistry and minor in Spanish. Her career goal is to be an obstetrician. She was a varsity soccer team captain, Spanish Honor Society president, Student Council secretary, taught Spanish to elementary students, is a mentor at Outdoor Odyssey and member of National Honor Society. Delaney also enjoys volunteering in her community through National Honor Society and Spanish Honor Society. In her spare time, she likes to read, bake, and go shopping.

Cooper Huston is the son of Jason and Julie Huston and will be graduating from Berlin-Brothersvalley High School. In the fall, he plans to attend Greater Johnstown Career and Technology Center to earn a certificate in Heating & Air Conditioning Technology with a career goal to add HVAC to his father's business. At Berlin, Cooper participated as a varsity athlete on the football and baseball teams. In his non-school time, he enjoys helping his dad and hanging out with his family.

Grady Klosky is graduating from Windber Area High School and is the son of Nathan and Jessica Klosky. His future plans include attending the University of Pittsburgh at Johnstown to receive a bachelor's degree in business with a career goal to work in real estate. He was a varsity athlete in football, track and field, and basketball where he recently surpassed 1,000 points his last basketball season. Grady is also a member of the National Honors Society, Student Council, SADD, and for the last seven years, played on the Laurel Highlands Storm AAU basketball team. In his spare time, he enjoys golfing and weight lifting. He has previously worked as a life guard, camp counselor and for a landscaping business. Grady has also volunteered for the Windber Hospice Memorial Service, landscaping the Veterans Park Memorial in Windber and helped organize and coach youth basketball camp in his school district.

Ruth Ann Mathias is a senior at Rockwood Area High School and is the daughter of Kevin and Ann Mathias. After graduation, she plans to attend the University of Pittsburgh Main Campus and major in International Studies with a career goal to be a foreign affairs analyst. In school, she was a part of Future Business Leaders of America, National Honor Society, French National Honor Society, Student Council, and Future Farmers of America. Ruthie was also a varsity cheerleader where she served as captain her senior year and was a part of concert choir. Outside of school, she competed regionally and nationally on a dance team. She is active in her community by volunteering at the Special Olympics, serves as a Camp PARC junior counselor, and helped with WoodmenLife Giving Together projects. In her spare time, Ruthie works part-time at Dough Girls Pizza in New Centerville, enjoys reading and traveling. Ruth Ann was also selected to attend Youth Tour last summer.

Bently Moore is a senior at Berlin-Brothersvalley High School and is the daughter of Jamie Moore and Rebecca Moore. After graduation, she plans to attend West Virginia University and major in pre-med with a career goal to be a dentist. In school, she was her senior class president, member of National Honor Society and Friends of Rachel "FOR" Club, which is a school-based program designed to promote a culture of compassion and kindness and create a positive school environment. When Bently is not in school, she spends the majority of her time working as a dental assistant. When she is not working, she enjoys hiking, gardening and using her hands to build and create unique things.

Elika Pletcher is a senior at Rockwood Area High School and is the daughter of Bret Pletcher and Fenna Queer. After graduation, she plans to attend Duquesne University and major in physicians assistant studies with a career goal to become a physician assistant. In school, she was a varsity athlete on the softball team, secretary of French Honor Society, member of National Honor Society, SADD president, Student Council treasurer, Class of 2025 Vice-President, Yearbook Club and Future Business Leaders of America. Elika also served as a youth representative for the Kingwood Church of God and volunteered at the Farmers & Threshermen's Jubilee and Special Olympics. When she is not in school or studying, she likes to balance her time by going to the gym, working part-time, going for a run, spending time with family and baking. In addition to her busy schedule, Elika represented Somerset REC on Youth Tour last summer.

2025 Scholarship Recipients



Carly
Pongrac



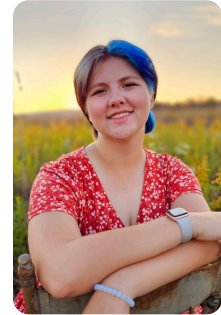
Shawn
Shaffer



Haylee
Speicher



Chloe
Weaver



Addison
Zimmerman

Carly Pongrac is a senior at Shade-Central City High School and is the daughter of Chris and Angel Pongrac. She plans to attend Saint Francis University to obtain a bachelor degree and certification in exercise physiology and doctorate in physical therapy. Her career goal is to become a Certified Exercise Physiologist and Doctor of Physical Therapy. Carly is the 2025 Senior Class and National Honor Society secretary, Student Council and Yearbook Club treasurer, varsity volleyball and basketball captains, and member of Envirothon. In her non-school time, Carly is an active member of Our Lady Queen of Angels parish and volunteers as a coach to teach younger kids how to play volleyball and basketball. She is an active volunteer in her community at fundraising events and playing bingo with elders at a nursing home.

Shawn Shaffer is a senior at Somerset Area High School and son of Shane and Duana Shaffer. His future plans include attending Rosedale Technical College to obtain an associate's degree in HVAC with a career goal to become a second generation business owner of Shane Shaffer, Inc. Shawn participated in varsity rifle for four years and varsity football for one year and is a past Boy Scout. He currently attends Somerset County Technology Center in the Electrical Occupations program and is the class president. In his free time, he enjoys spending time with family and friends, hunting, farming, and riding side-by-sides. He is also a member of the Laurel Highlands Church of Christ youth group and assists with Sunday services.

Haylee Speicher is the daughter of Danial and Sharon Speicher and attends Berlin-Brothersvalley High School. In the fall, she plans to attend Penn State Fayette Campus to obtain a bachelor of science degree in nursing. Her career goal is to become a certified registered nurse anesthetist. In school, she participated on the varsity softball and volleyball teams, was involved in numerous high school musicals, performed with concert choir and show choir, is the Spanish Club president, Leo Club president, National Honor Society vice president, and student school board representative. In her spare time, she plays travel softball for Nitro Fastpitch, dances at Studio 7 School of Dance, and attends Saint John the Baptist Catholic Church. Haylee was also selected as a student delegate last summer to attend Youth Tour.

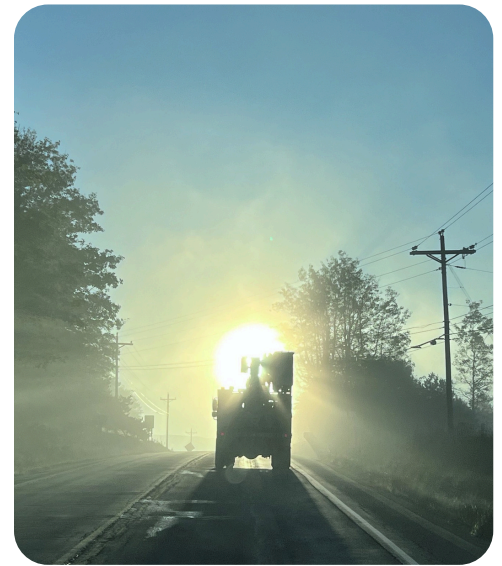
Chloe Weaver is graduating from Rockwood Area High School and is the daughter of Dan and Angie Weaver. Her future plans include attending Penn State University Main Campus to obtain a bachelor's degree to become a pediatric oncologist. At her school, she is a varsity cheer captain, Class of 2025 Treasurer, member of National Honor Society, National Business Honors Society, and Spanish Honor Society secretary. She is also involved in SADD, Journalism, Student Council vice president, Chorus president, Future Business Leaders of America and high school musicals. Outside of school, she is a dancer at The Garrett School of Dance where she also enjoys volunteering her time with younger girls to teach them dance. Chloe is involved in her community by volunteering at the New Centerville Jubilee, Special Olympics, and New Centerville Ladies Auxiliary. In her free time, she loves to travel to new places and likes to visit Walt Disney World in Orlando, Florida and spend time with her nephew. She was also a 2024 Youth Tour participant sponsored by the co-op.

Addison Zimmerman is a senior at Somerset Area High School and is the son of Scott and Elisha Zimmerman. After graduation, she plans to enroll at the University of Pittsburgh at Johnstown and dual major in biochemistry and biology. Her career goal is to be a genetic engineer. At Somerset, Addy is the National Honor Society vice president, Societe Honoraire de Francais vice president, Tri-M Music Honor Society president, Concert Band vice president, marching band drill technician, flute section leader and Girl Scouts ambassador. In her non-school time, she enjoys spending time with family and friends, having intellectual conversations with them and working. Addy also enjoys alone time reading, playing her flute or playing video games.

**The scholarship committee is formed by three employees and three directors of the cooperative. Scholarships are paid out of the Co-op's Escheats fund, which is unclaimed capital credit money. Escheat money is also used to cover the costs associated with Youth Tour, annual donations to local fire departments, and donations to community organizations.*



Board directors Jason Huston, Floyd Lehman, Harvey Reckner and Jim Harrold serve food at Member Appreciation Day held in October of each year.



Linemen respond to an early morning outage.

We are plugged  into our community.



Linemen Tanner Smith gives a safety presentation to students at the Union Street Playground in Somerset.



Emily Baer meets with members to discuss their broadband availability.



Brandon Hurley, Youth Leadership Council representative voted to represent PA electric co-ops at NRECA.



Emily Baer presented a donation to Berlin tech-ed students inspired to design and fabricate motorized trikes.



Somerset REC Scholarship recipients receiving their award at the 2024 Annual Meeting at Somerset Area High School.

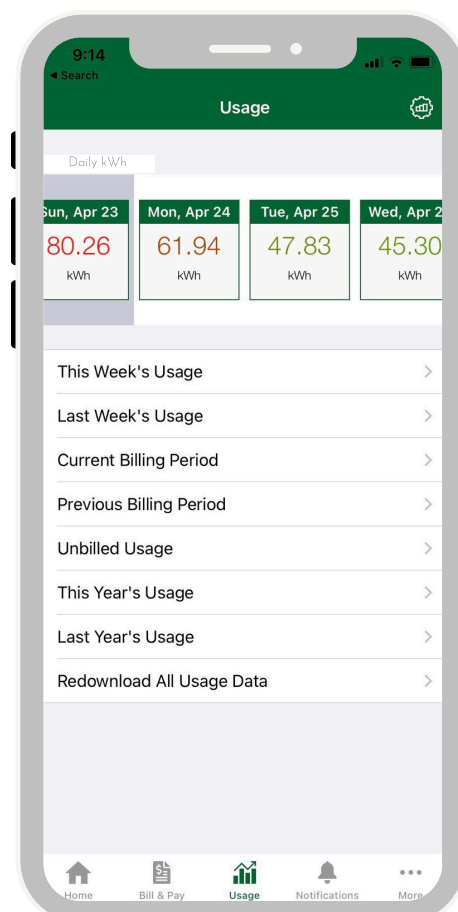
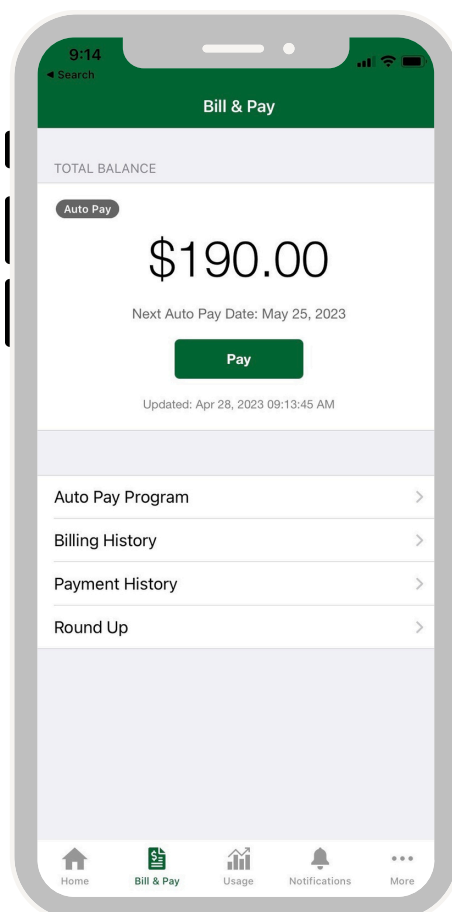
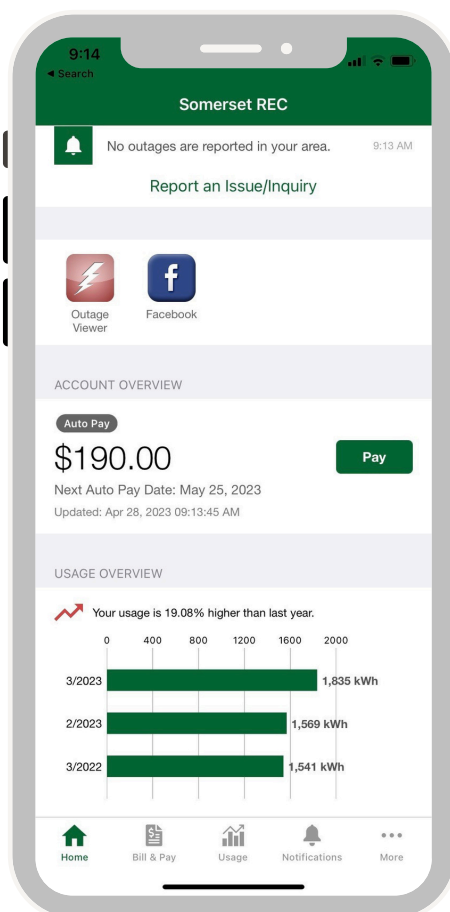


2024 Somerset County Youth Tour delegates and their chaperone, Emily Baer, at Capitol Hill in Washington, D.C.

Have you tried the app?

Smarthub is a convenient way to manage your Somerset Rural Electric account. This free app is available to download on your tablet or mobile device with easy to use features such as:

- ✓ VIEW OR PAY YOUR ELECTRIC BILL
- ✓ ENROLL IN AUTO PAY OR ROUND-UP PROGRAM
- ✓ CHECK DAILY, MONTHLY & YEARLY ELECTRIC USE
- ✓ REPORT AN ISSUE OR OUTAGE
- ✓ VIEW OUTAGE MAP



Somerset Rural Electric Cooperative, Inc.
223 Industrial Park Road
Somerset, PA 15501

☎ 814-445-4106

www.somersetrec.com



 **facebook**